

 [Friend on Facebook](#)

 [Follow on Twitter](#)

[Forward to a Friend](#)

tjg now exclusively represents...

Gemma Lynch-Memory



Gemma Lynch-Memory, *Bloom No. 13*
Oil & Mixed Media on Canvas, 120 x 100 cm

Gemma's works are abstract landscape compositions that feature rich and vivid colours. The iconographic markings and segregated space entice an emotive response and long, lonely horizons where "heaven meets earth" speak to our country yearnings. Organic debris made up of small sticks, soil, rocks and dried vegetation give the work a "living" quality and occasional hand-painted text introduce further depth and meaning.

Having held 25 solo exhibitions in her career to date, it is testimony to Gemma's creative strength and longevity. Her work is featured in collections both in Australia and overseas.

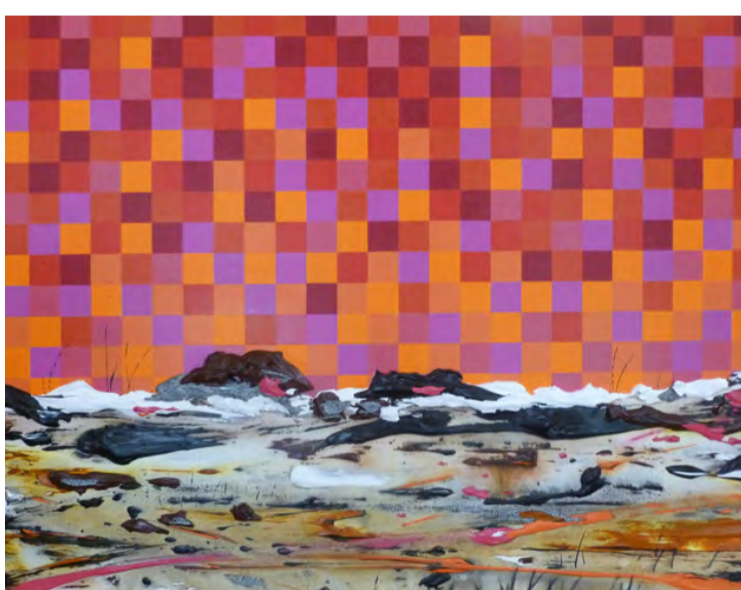
For more information about Gemma's works, please contact the gallery: info@trafficjamgalleries.com

Di Taylor



Di Taylor, *Good Night For Prawning*
Acrylic on Canvas, 122 x 152 cm
[View more](#) by Di Taylor

Rebecca Pierce



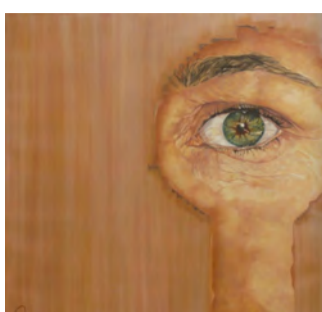
Rebecca Pierce, *BlinkSquint I Big Red*
Acrylic and Ink on Canvas, 122 x 153 cm
[View more](#) works by Rebecca Pierce

Ji Chen



Ji Chen, *River Bank (Katherine)*
Oil on Canvas, 120 x 130 cm
[View more](#) works by Ji Chen

**Watching,
Waiting...**



Jane Pestell-Litten, *Eye Spy*

[View more](#)



Emma Sheldrake, *Waiting In Bed Naked*

[View more](#)



John Brooke, *Flight Risk*

[View more](#)



Dan Mason, *Whale Watching*

[View more](#)



Nikki Perzuck, *Ocean View*

[View more](#)



Danielle McManus, *How Long Will This Take*

[View more](#)

Beautopia

'Beautopia', Jenny Green's major solo exhibition for the year opens Thursday 3 May 2012.

You are invited to attend this special event from 6pm.

Join Jenny and tjg for refreshments and appetisers on the night. Guest Speaker, **Anne Maria Nicholson** will open the exhibition.

RSVP: info@trafficjamgalleries.com



Jenny Green, *Pink Shoe*

[View more](#)

Worlds Apart....

It doesn't matter how the paint is put on, as long as something is said.

Jackson Pollock 1912 - 1956

[follow on Twitter](#) | [friend on Facebook](#) | [forward to a friend](#)

traffic jam galleries 

41 Military Rd Neutral Bay NSW Australia 2089 9953 3831
info@trafficjamgalleries.com tjg.com.au

Copyright © 2012 traffic jam galleries, All rights reserved.



[unsubscribe from this list](#) | [update subscription preferences](#)